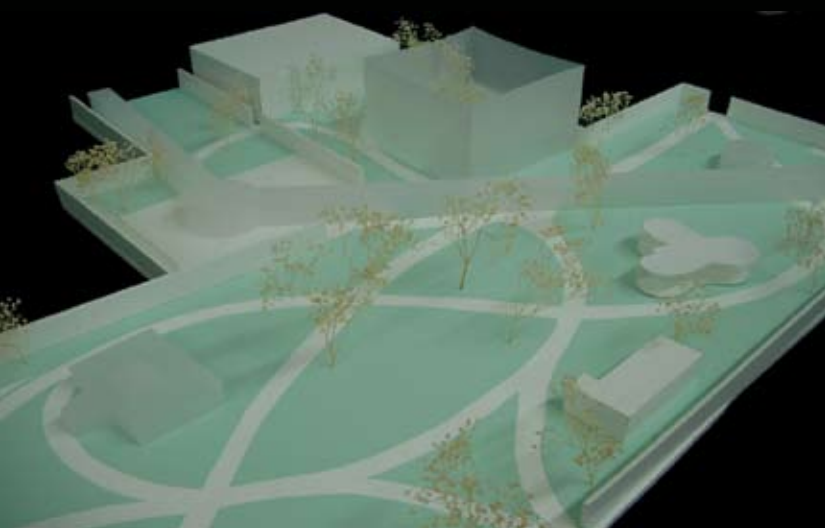


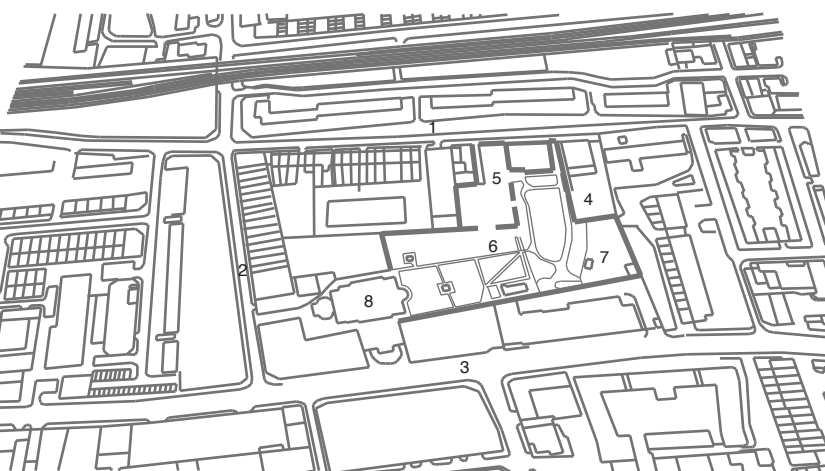
Gallery design

St Georges in the East Church yard



The churchyard gallery is just 2 minutes from Shadwell station. Although this site is surrounded by noise and automobile exhaust, this churchyard is quiet and has many trees and grass. The aim of this project is to design a gallery in this location and to change it as an enjoyable space for people from child to adults. Moreover, the visitors, especially for the inhabitant, around the area, can come and have a rest or take a walk more.

Scratching, memorial, Grave stones and letters.... All art pieces in this gallery are related to 'words'. This gallery could be called 'gallery of words'...



the outside



1.Cable Street
*to Shadwell station
*Bus station
*Clean



2.Cannon Street Road
*cars
*narrow
*old buildings



3.The Highway
*wide & main
*cars
*exhaust gas



4.Nursery School
*students come
*daytime

the site



5.The entrance
*graffiti
*walls
*benches



6.Church Yard
*dogs and people
*trees
*quiet



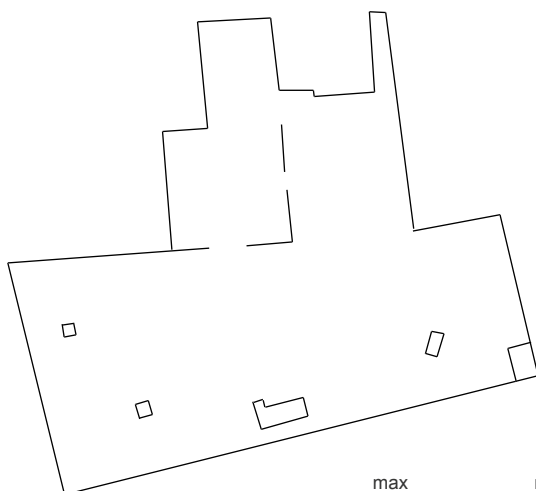
7.Playground
*nothing
*concrete ground
*deserted



8.Church
*beautiful
*memorials
*trees

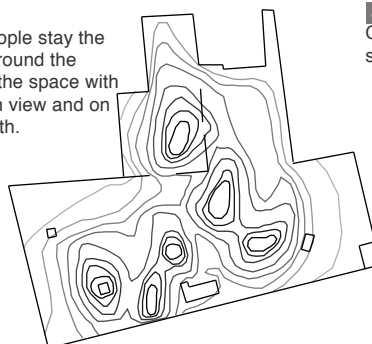
site analysis

This site is surrounded by a residential area, which does not have high buildings. On site, there are many trees and grass, and nature makes the area peaceful.



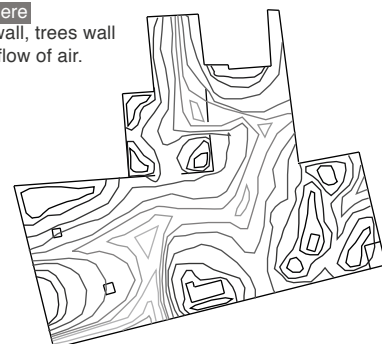
people

Where people stay the most, is around the benches, the space with the church view and on the footpath.



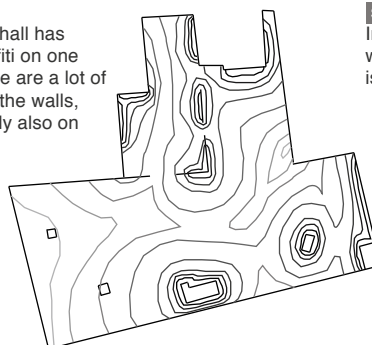
atmosphere

Corner, wall, trees wall stop the flow of air.



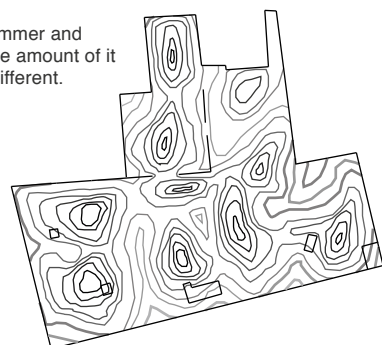
graffiti

The town hall has huge graffiti on one side. There are a lot of graffiti on the walls, surprisingly also on the tree.



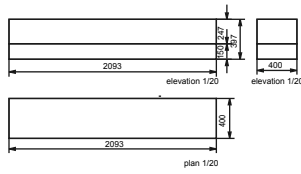
sunlight

In the summer and winter, the amount of it is quite different.

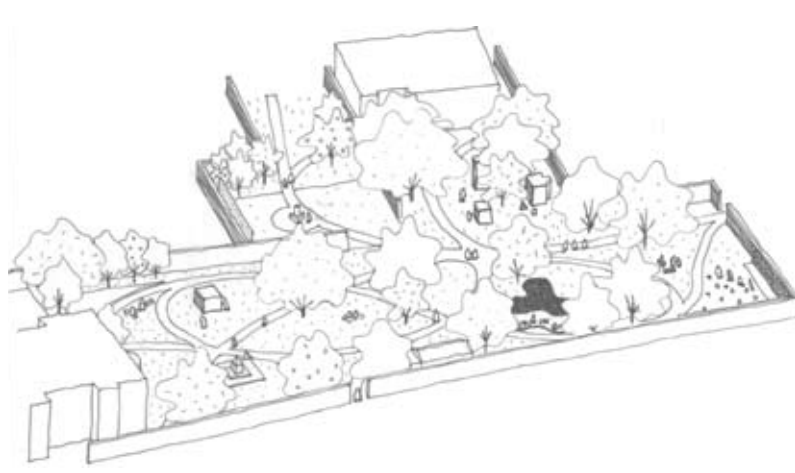
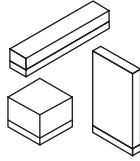
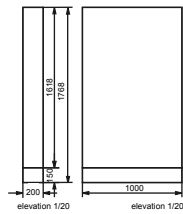
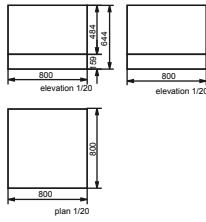


Contents

Scratch light footprint plan

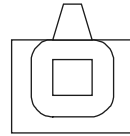


3 lights are painted with black ink. After scratching them, light comes out from the inside. You can leave your signature, a message or a secret code.



Memorial for the exlibrary footprint plan

This memorial is for the ex-library, which does not exist anymore. The space should be peaceful and calm, and relate to the library.

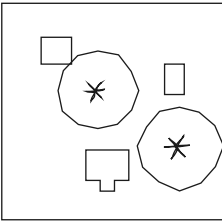


Grave stones playground footprint plan

In this yard, there are a lot of gravestones. Some of them are put on the wall; others are standing as a fence. Using them, they create a small playground in this churchyard.



Wooden letters footprint plan

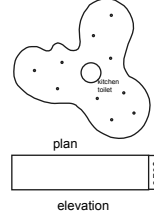


These are 3 dimensional letters made from wood. Sit, stand, or touch them, to feel the old word.

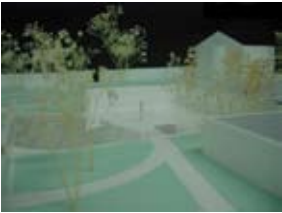


Cafe

A couple of benches are in the site. However, the number of cafe or restaurant in the area is obviously few. For the visitor, eating, sitting, and drinking space are needed.

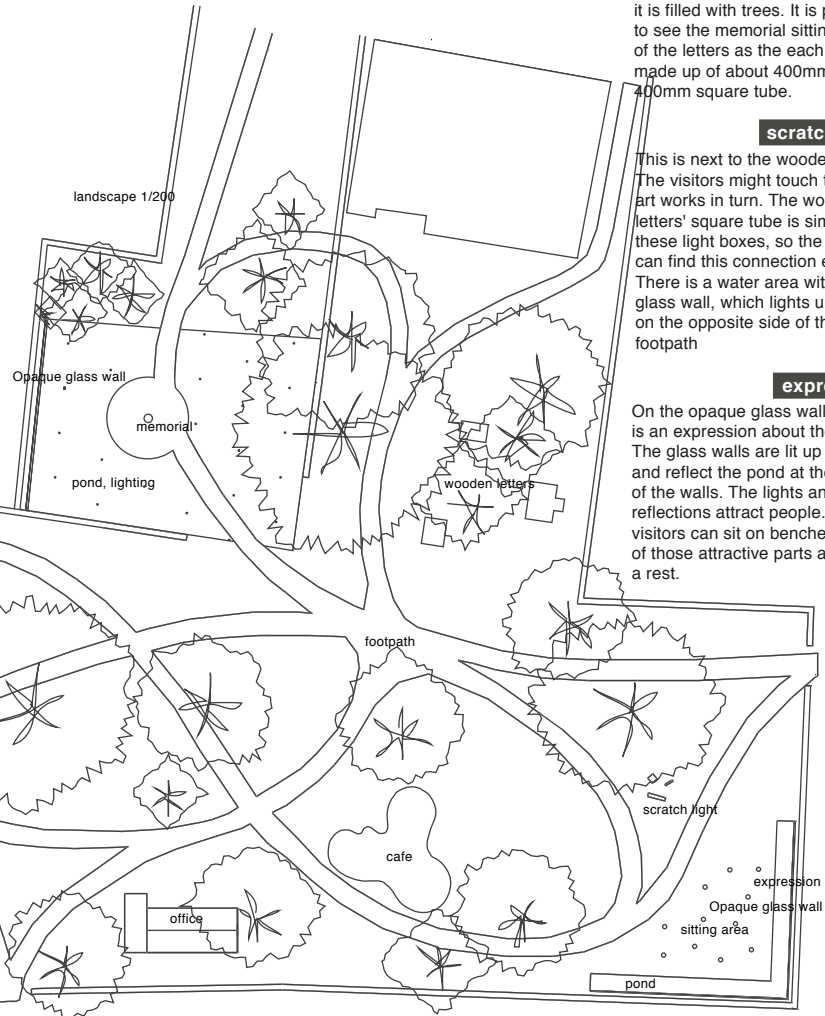


scale
10000 mm



The Gallery

Trees, trees and trees...There are a number of trees in the site. Thanks to the nature in there, the visitors can feel the soft atmosphere. Not to break the atmosphere, the footpath should be an organic shape and enjoyable for the visitor. Each piece is placed along the footpath that links all of them. This area is near the Thames River, so introducing water, as an element. Moreover, water makes people relaxed; it is nice for the visitor.



Wooden letters

This artwork consists of 3 letters and 2 trees. The material is wood, so it is best to place them where it is filled with trees. It is possible to see the memorial sitting on one of the letters as the each letter is made up of about 400mm * 400mm square tube.

scratch light

This is next to the wooden letters. The visitors might touch these 2 art works in turn. The wooden letters' square tube is similar to these light boxes, so the visitors can find this connection easily.

There is a water area with opaque glass wall, which lights up at night on the opposite side of the footpath

expression

On the opaque glass walls, there is an expression about the gallery. The glass walls are lit up at night and reflect the pond at the bottom of the walls. The lights and reflections attract people. The visitors can sit on benches in front of those attractive parts and have a rest.

Memorial

The memorial needs long paths for the visitor to think about it. This space is peaceful since it is divided by walls, trees and the pond. A lot of the installed lights on the ground illuminate the space and the memorial.

Grave stone playground

Around the playground, there are 2 memorials that have existed from the former landscape design. These three pieces are made with stone. While children are playing in there, their parents are able to see the huge view of the church.

Cafe

This cafe is designed with the image of the site shape and organic rounded shape. The wall is glass and the inside columns are narrow, so this cafe has a light image.