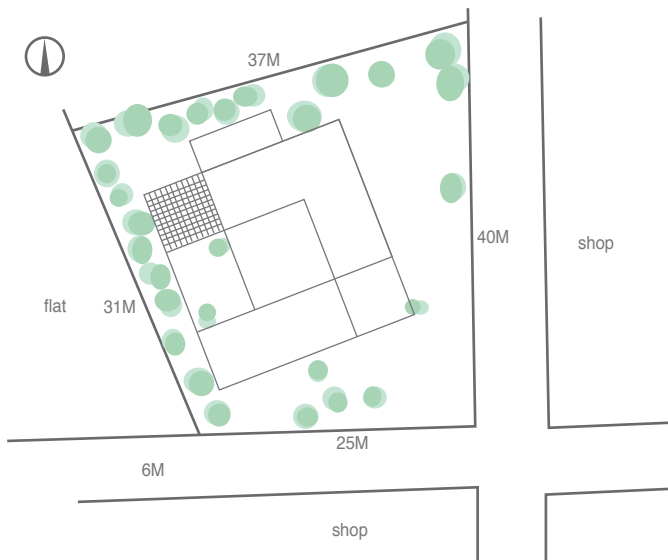
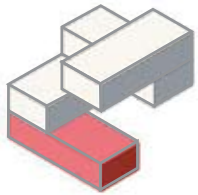


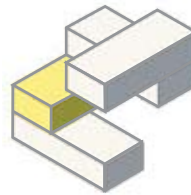
# House for 3 generation family



3 generations of families live together in this house. The oldest pair was born in the Meiji and Taisho period, the middle pair was born in early Showa period and the youngest was born in mid-Showa period. 3 generations of families living together in this house means that the Meiji, Taisho and Showa periods are piling up in one place. In history, there are many kinds of occurrences that happen in various places; however, they are a sequence of events. Similarly, each family has their own life but have connections. The image of this house is children stacking up some bricks.



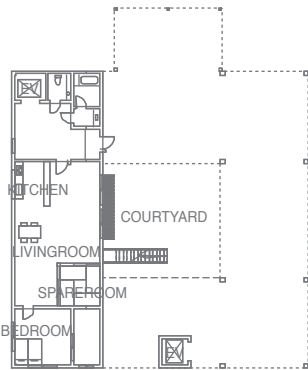
- 1F PROGRAM**
- + For Elderly people
  - + Grand grand parents
  - + Meiji and Taisho Period
  - + Base floor
  - + Courtyard
  - + To live a life of ease
  - + To be happy by seeing children's smile.
  - + Hard to move



- 2F PROGRAM**
- + Grand parents
  - + Early Showa period
  - + To be happy by seeing children's smile.
  - + Sometimes taking care of their parents
  - + To live a life of ease
  - + Hobby
  - + Active

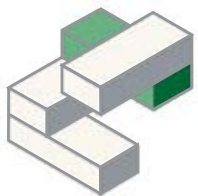
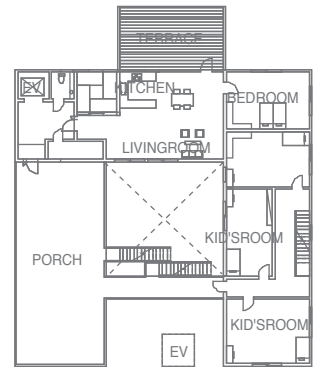
## -1F

The couples that were born in Meiji and Taisho eras mainly live on the 1st floor, since they cannot go up easily to other floors. Their room faces the courtyard. It is important for their life to see their grand posterity's face. As an elevator connects all floors, everyone can use the front door in 1stF to meet and care for each other.



## -2F

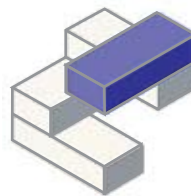
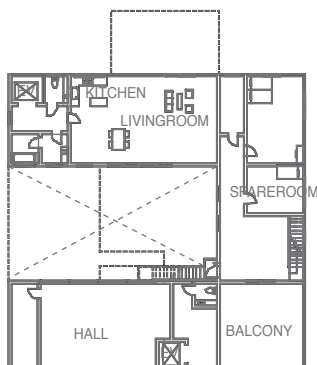
Grand parents live on the 2nd floor. To get to the 2nd floor, they use a step in courtyard or the elevator from the 1st floor. They have their own terrace in the living room. On the 2nd floor, there are the children's rooms for the youngest family. When the children want to meet their grand parents, they have to pass the balcony.



- 3F PROGRAM**
- + Parents
  - + Musician
  - + Children
  - + Students
  - + Modern
  - + Busy

## -3F

The youngest family lives on the 3rd floor. There are 2 ways to access the 3rd floor, one is by an outside step beside the front door in the 3rd floor and the nother is by the elevator from the 1st floor. Since the couple are musicians, they have a hall which they use for music lessons or concerts. To protect whole family's privacy, there is a direct elevator to the hall outside. The hall is enclosed some glass, so it is the most modern area in the house.



- Rooftop PROGRAM**
- + Hall
  - + Visitor
  - + Entrance
  - + Clear

## -Rooftop

All the families can come and have a drink or their meals here.

